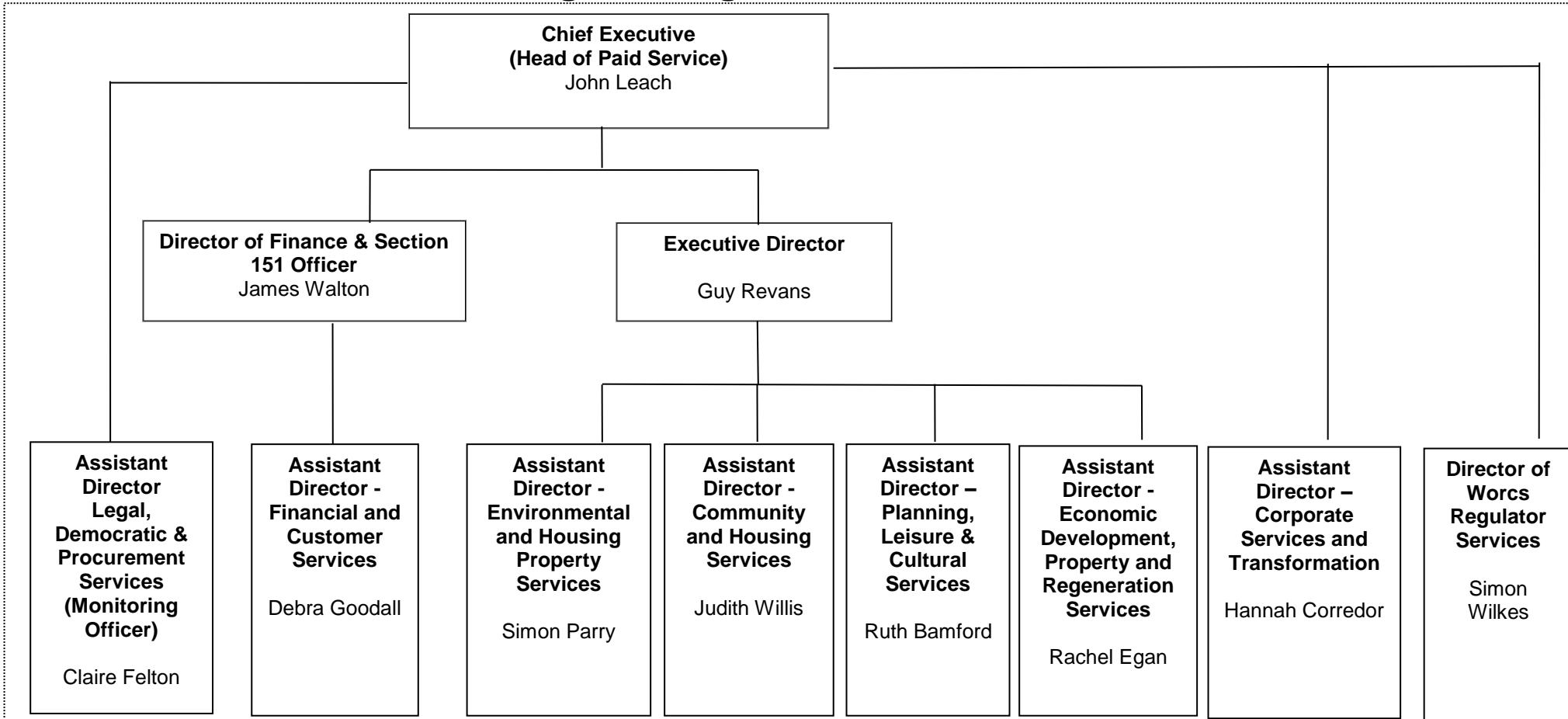


# Bromsgrove District Council and Redditch Borough Council Single Management Structure



## Chief Executive

- Communications, Marketing and Promotion (including oversight of web content)
- Printing & Reprographics
- Civic/Mayoral Support
- Corporate Administration/ Central Post Opening

## Assistant Director – Corporate Services and Transformation

- I.C.T.
- Business Development
- 5G / Digital Champion
- Web Development
- Land and Property Gazetteer / GIS / Street Naming and Numbering
- Transformation, Business Process Re-engineering and Lean Systems
- Information Management
- Freedom of Information, Data Protection, Records Management
- Organisational Development (including Workforce Planning and Succession Planning)
- Training & Development (strategy)
- Performance Management & Improvement
- Policy (excluding service specific strategy)
- Consultation & Community Engagement
- Customer Insight
- Human Resources
- Training & Organisational Development
- Health & Safety
- Equalities & Diversity
- Commercialism – Operational efficiency

## Director of Worcs Regulatory Services

- Health & safety
- Food Safety
- Food Standards
- Licenses (all)
- Pest & Dog Control
- Animal Health and Welfare
- Contaminated land
- Fair Trading
- Consumer and Business Advice
- Air Quality
- Metrology
- Product Safety
- Rogue Trading and Counterfeiting
- Underage Sales
- Statutory Nuisances
- Infectious Diseases

**Assistant Director – – Legal,  
Democratic and Procurement  
Services**

- Professional Legal Advice & Services
- Election & Electoral Services, Periodic Electoral Review
- Democratic Services & Member Support
- Monitoring Officer Role, Probity & Standards
- Governance
- Advice to Parishes
- Member Development
- Land Charges
- Procurement

**Assistant Director – – Economic  
Development, Property and  
Regeneration**

- Assets & Facilities Management
- Property
- Economic Development
- Town Centre Regeneration

**Assistant Director – – Financial  
and Customer Services**

- Accounts & Financial Management & Advice
- Audit
- Risk Management
- Payroll (RBC, BDC, WFDC)
- Revenues including corporate Income & Debt Management
- Benefits
- Customer Services including:
  - Centres and One Stop Shops
  - Complaints and Customer Feedback
  - Customer Service Strategy
  - Cashiers
  - Reception Services
  - Switchboard Services

## **Assistant Director – – Environmental & Housing Property Services**

- Waste Management
- Place teams including:
  - Street Scene / Street Cleansing
  - Grounds Maintenance/ Landscaping
- Bereavement Services
- Stores and Depots
- Cesspools/Sewers
- Engineering and Design
- Fleet Management/Workshops
- Minor Works Team
- Abandoned Vehicles
- Street Naming and Numbering (operational)
- Tree management inc TPOs
- Land Drainage
- Car Parks/Civil Parking Enforcement
- Housing Property Capital and Compliance
- Repairs & Maintenance (including voids and Equipment and Adaptations)
- Mechanical and Electrical
- Commercialism – income Generation / cost reduction

## **Assistant Director – –Community and Housing Services**

- Community Cohesion (Older and Young People) / Social Inclusion
- Community Safety
- Anti Social Behaviour Team
- CCTV & Lifeline Operation & Development
- Voluntary Sector & Community Networks, Grant Aid
- Transport
- Community Transport / Dial A Ride
- Bus Passes / Concessionary Fares
- Grant Aid
- Housing Strategy and Enabling
- Private Sector Housing
- Disabled Facilities Grants
- Travellers
- Shopmobility
- Children's Centres
- Climate Change / Energy Efficiency
- Homelessness
- Housing Options/Choice Based Lettings
- Housing Performance and Database
- Right to Buy
- St David's House Extra Care Housing
- Tenancy Management
- LSP & Other Strategic Partnerships

## **Assistant Director – – Planning, Leisure and Cultural Services**

- Strategic Planning (Planning & Local Development Framework)
- Development Management (including Planning Enforcement)
- Building Control
- Emergency Planning / Business Continuity
- Conservation
- Leisure and Cultural Services Strategy incorporating
- Development Services (Sports and Arts Development)
- Parks and Events